

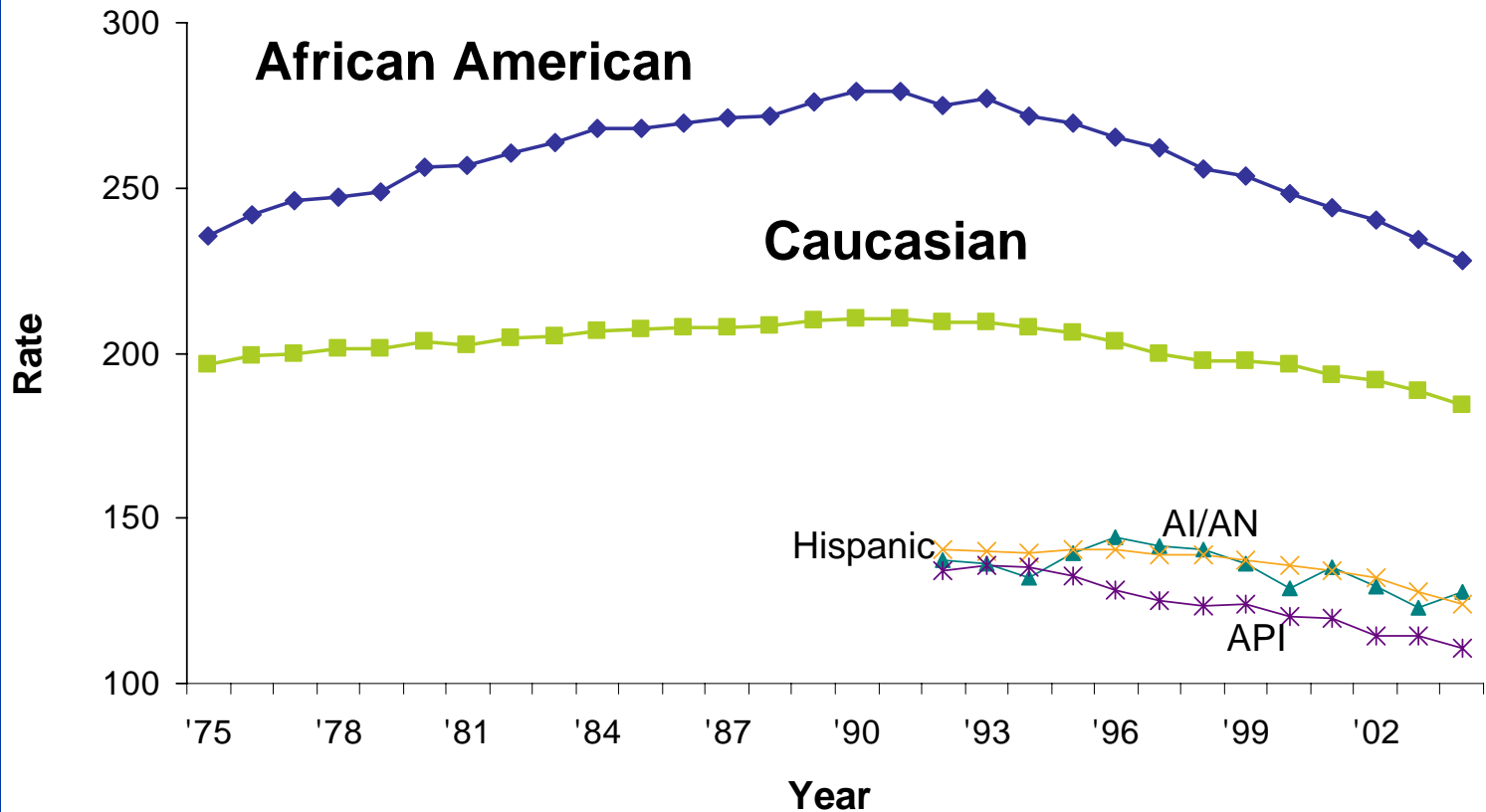


**Otis W. Brawley, M.D.**  
**Chief Medical Officer**  
**Executive Vice President**  
**American Cancer Society**

**Professor of Hematology,**  
**Oncology, Medicine and**  
**Epidemiology**  
**Emory University**

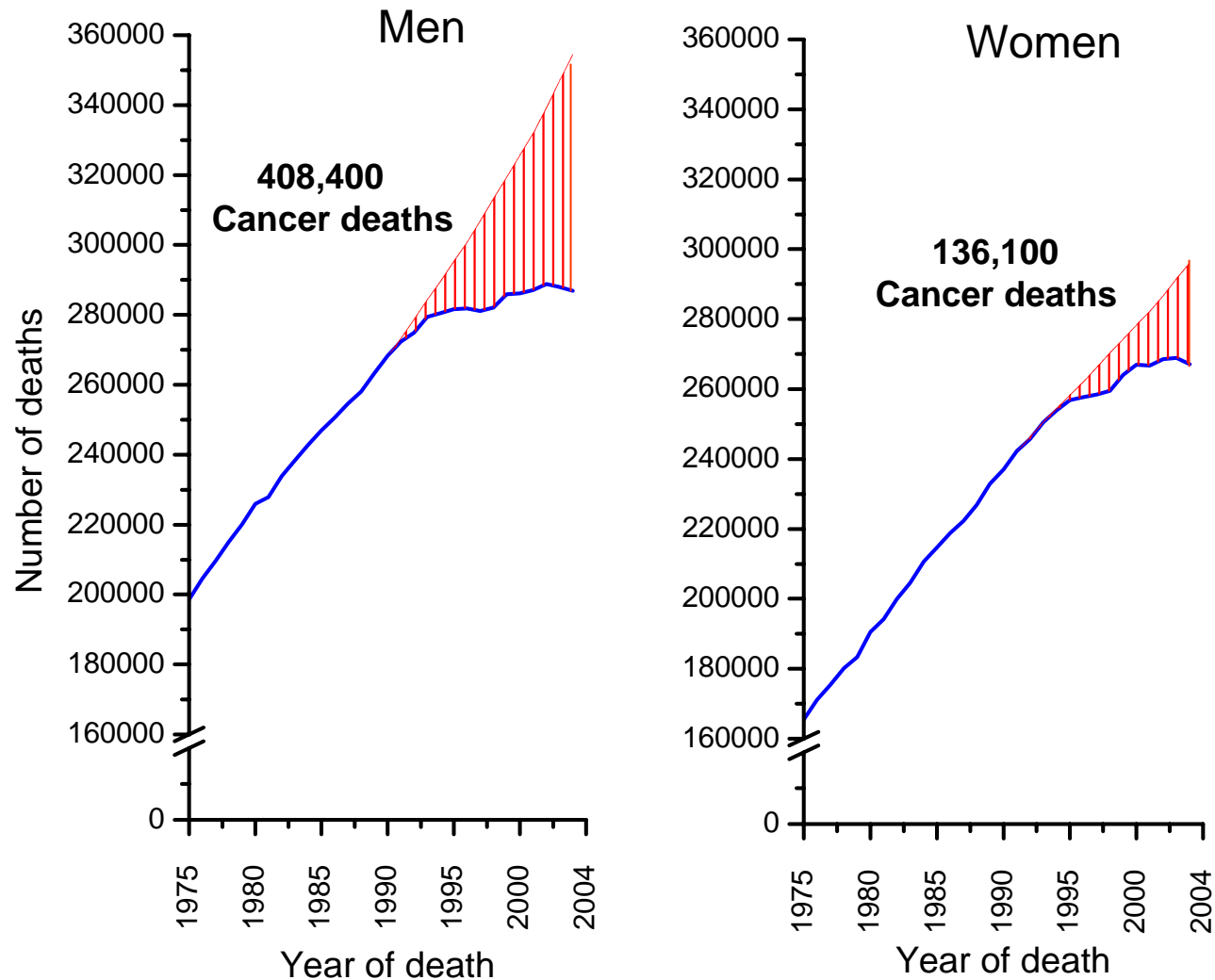
# All Sites – Cancer Mortality Rates 1973-2004

## By Race, Males and Females



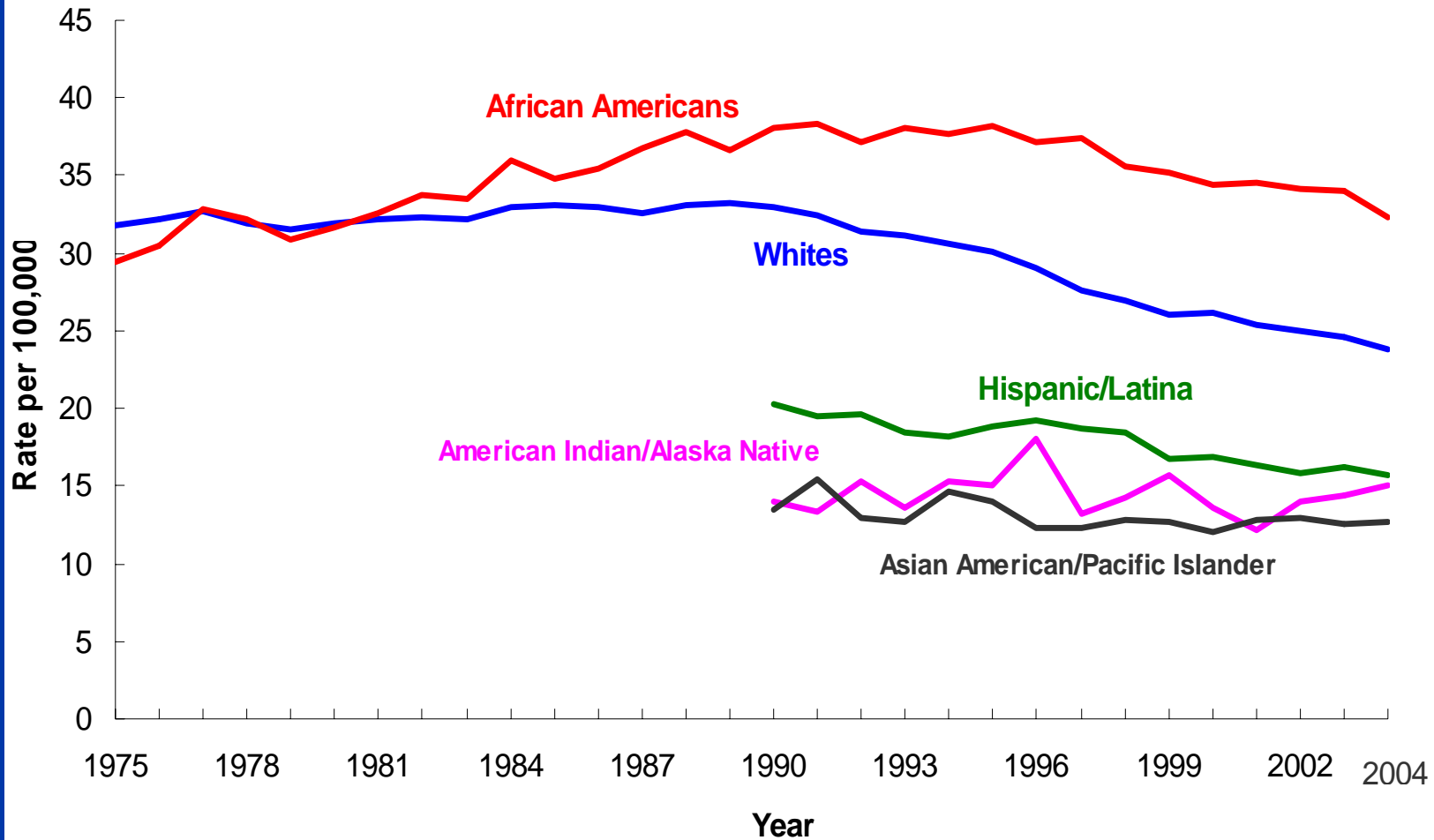
Incidence and mortality rates per 100,000 and age-adjusted to 2000 US standard population  
SEER Cancer Statistics Review 1975-2004.

# Total Number of Cancer Deaths Avoided from 1991 to 2004 in men and 1992 to 2004 in Women

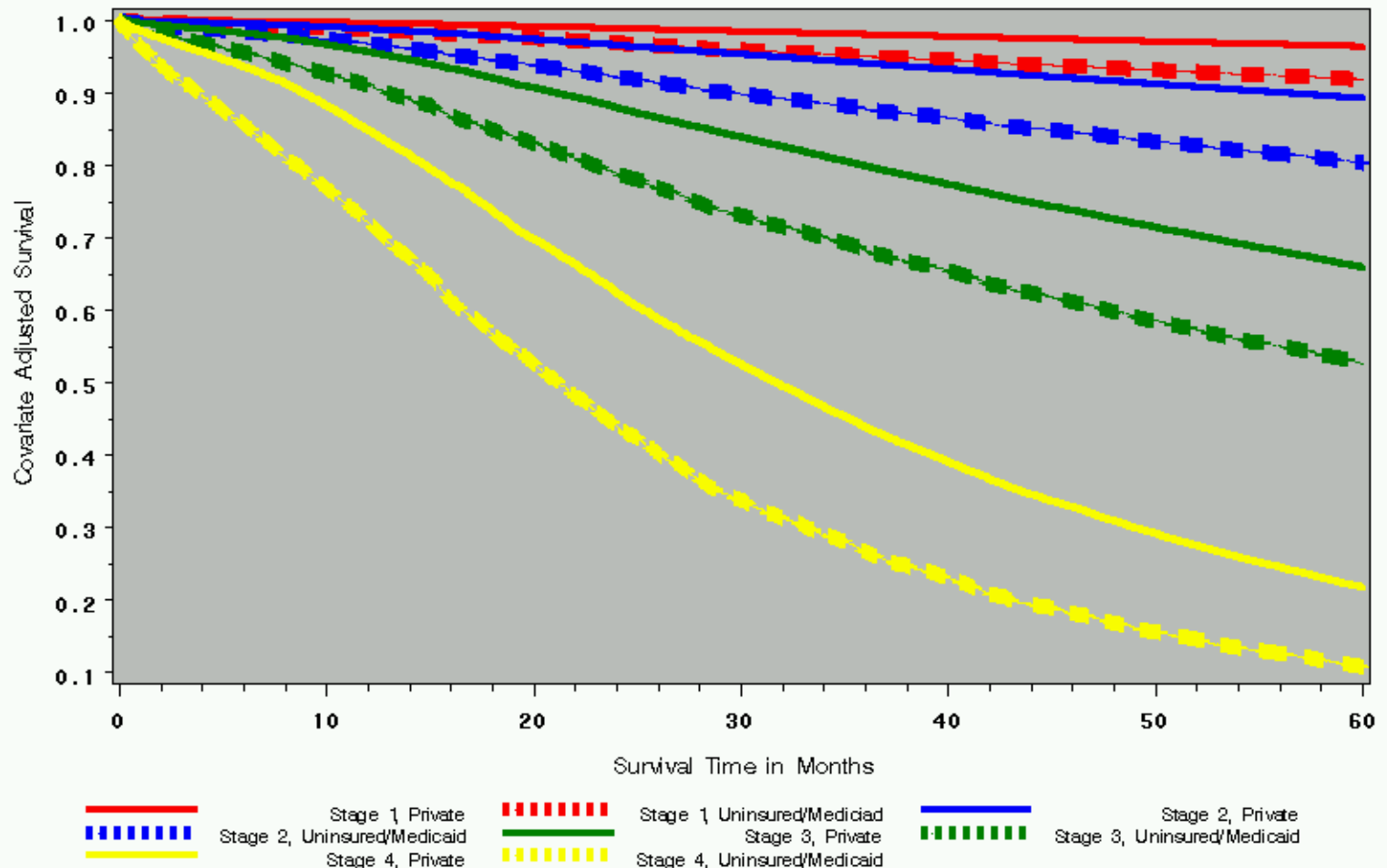


The blue line represents the actual cancer deaths recorded in each year and the red line represents the expected number of cancer deaths if cancer mortality rates had remained the same since 1991/1992.

# Female Breast Cancer Death Rates by Race and Ethnicity, US, 1975-2005

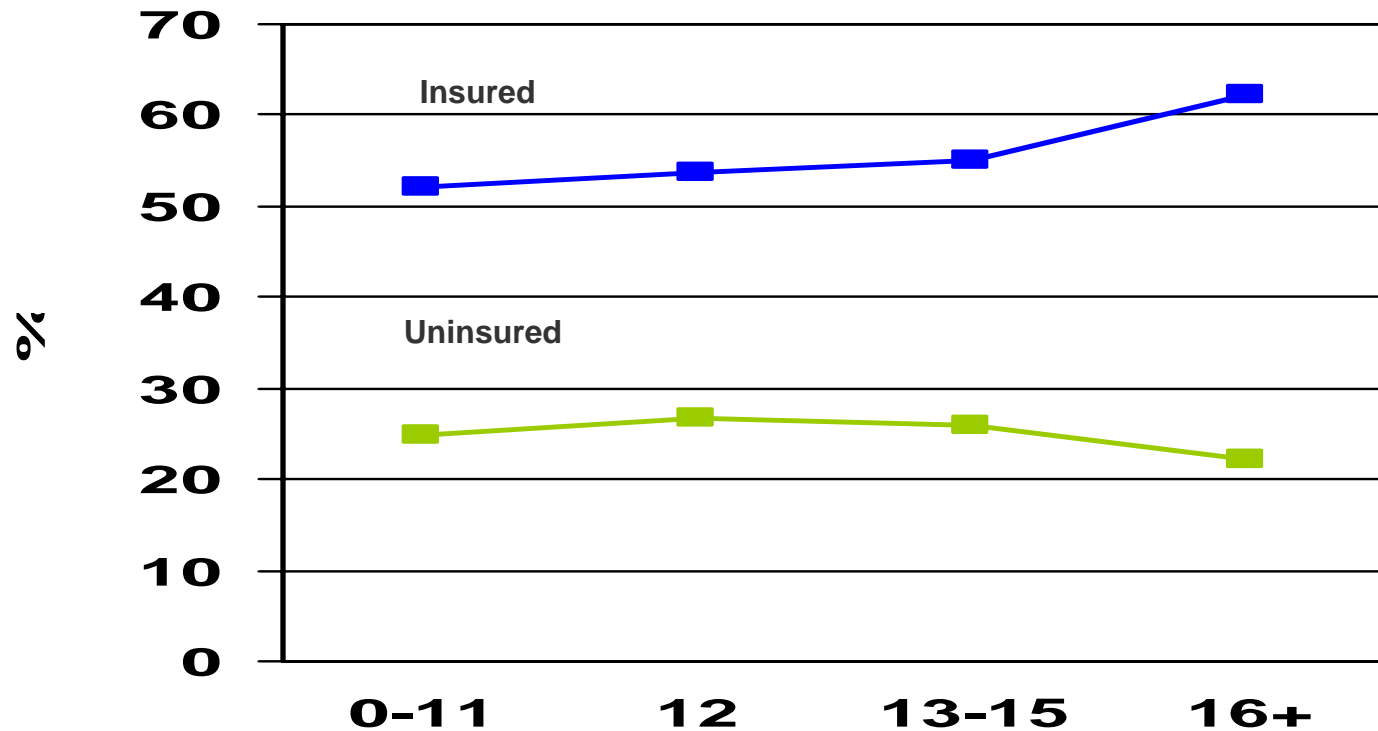


# Adjusted Breast Cancer Survival by Stages and Insurance Status, among Patients Diagnosed in 1999-2000 and Reported to the NCDB



# Mammogram Within the Last Year in Adult Women, ages 40-64, by Years of Education and Insurance Status, NHIS 2005

## All Races combined



Source: National Health Interview Survey 2005, National Center for Health Statistics, Centers for Disease Control and Prevention, 2006.

# Breast Cancer

- It is estimated that 57,000 breast cancer deaths were averted between 1990 and 2005 due to screening, early detection, and aggressive treatment.
- Breast cancer screening rates have actually gone down during the period 2000 to 2005

# Breast Cancer

- Imagine a world in which
  - Mammography rates were greater than 80%
  - All women with an abnormal screen got it evaluated
  - All women with breast cancer got optimal therapy

# The Harms of Screening

- False positive mammograms leading to a biopsy – 50% of women screened annually from age 40 to 49
- Overdiagnosis – 30% of all localized breast cancers do not need treatment as they are of no threat to the woman's life

# ACS Statement

- Mammography is a fair to good screening tool. American women deserve a better screening tool.
- The ACS recommends an annual high quality mammogram and clinical breast examination done by a health care professional beginning at age 40.



**Otis W. Brawley, M.D.**  
**Chief Medical Officer**  
**Executive Vice President**  
**American Cancer Society**

**Professor of Hematology,**  
**Oncology, Medicine and**  
**Epidemiology**  
**Emory University**